

RESORT VILLAGE OF CHITEK LAKE

BYLAW 94/2011

A bylaw of the Resort Village of Chitek Lake, to provide for the closure and transfer of a municipal road.

The Council of the Resort Village of Chitek Lake, in the province of Saskatchewan, enacts as follows:

1. Subject to the consent of the Minister of Highways and Infrastructure, the Municipality agrees to close and transfer the municipal road described as:

Lakeshore Drive, Plan No.BW930, the portion lying south of Blocks A, B and C, as shown crosshatched within the bold dashed line on the map that is attached and forms part of this bylaw.

2. This bylaw shall come into force this 22nd day of August, 2011.

(seal)



A handwritten signature in black ink, appearing to read "Allan Lee", written over a horizontal line.

Mayor

A handwritten signature in blue ink, written over a horizontal line.

Administrator

Certified to be a true copy of
Bylaw 94/2011 adopted by Council
Of the Resort Village of Chitek Lake,
On this 22 day of Aug., 2011.

A handwritten signature in blue ink, written over a horizontal line.
Administrator

PLAN OF SURVEY

SHOWING SURFACE SUBDIVISION
 OF PART OF

Lakeshore Drive - Reg'd Plan No. BW930
Projected Twp. 55-Rge. 12-W3rdMer.
Chitek Lake

SASKATCHEWAN

BY: J.S. Redding, S.L.S.

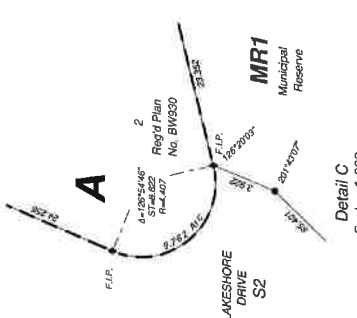
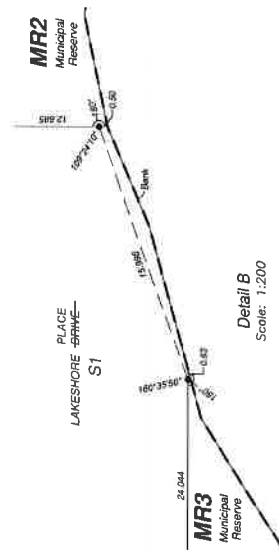
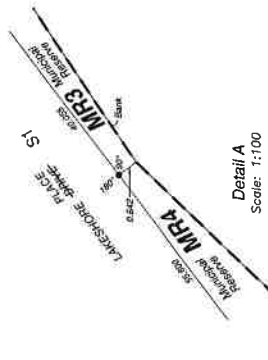
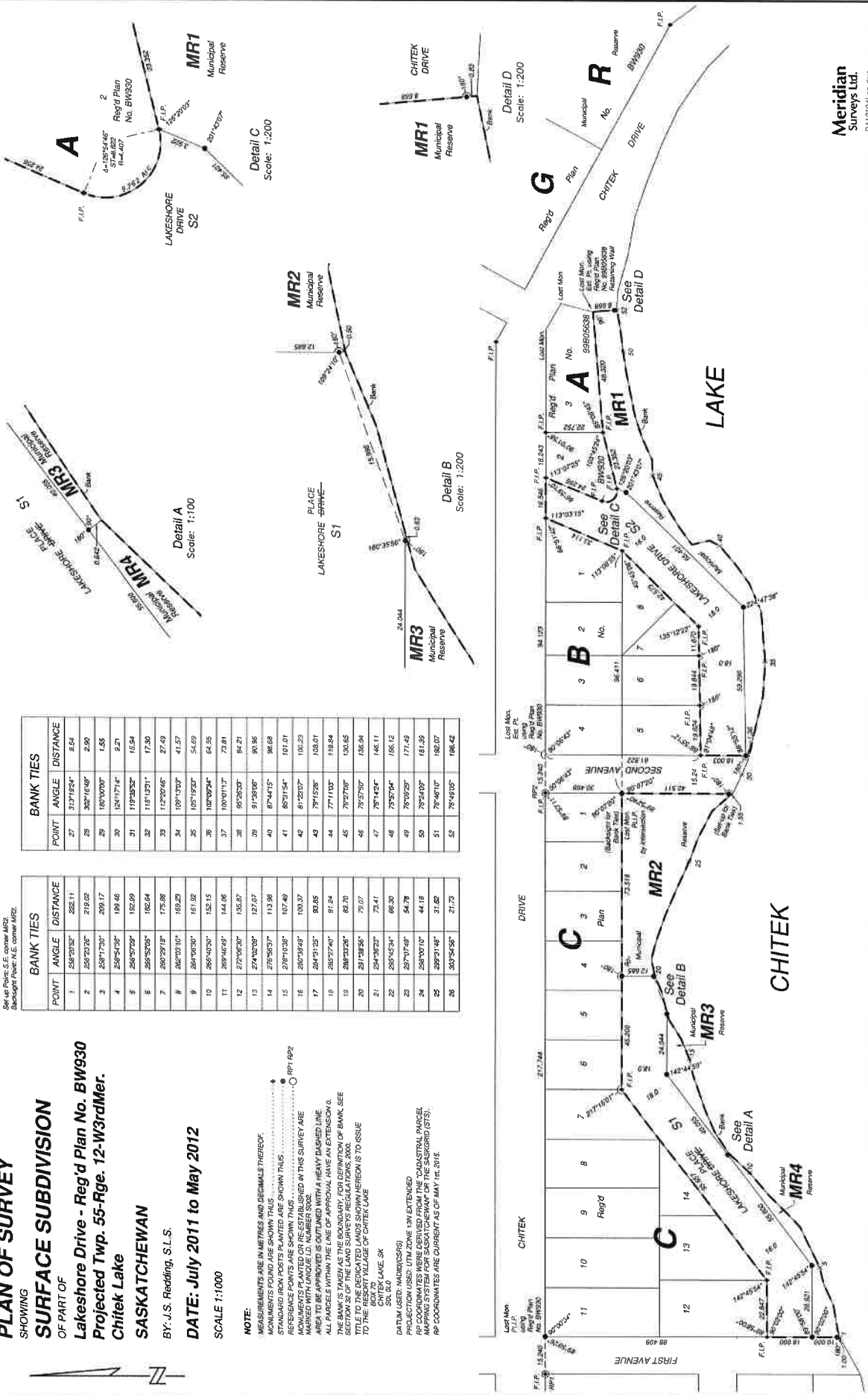
DATE: July 2011 to May 2012

SCALE 1:1000

NOTE:
 MEASUREMENTS ARE IN METRES AND DECIMALS THEREOF.
 MONUMENTS FOUND ARE SHOWN THIS .
 STANDARD IRON PINS PLANTED ARE SHOWN THIS .
 REFERENCE POINTS ARE SHOWN THIS .
 POINTS OF INTERSECTION ARE SHOWN THIS .
 MARKED WITH UNIQUE I.D. NUMBER(S).
 AREA TO BE APPROVED IS OUTLINED WITH A HEAVY DASHED LINE.
 ALL PARCELS WITHIN THE LINE OF APPROVAL HAVE AN EXTENSION Q.
 THE BANKS TAKEN AS THE BOUNDARY FOR DEFINITION OF BANK. SEE
 THE SURVEY FOR THE LOCATION OF THE BANKS. THE BANKS ARE
 TO THE RESORT VILLAGE OF CHITEK LAKE.
 CHITEK LAKE, SK
 S24, 0/0

DATA USED: MAIR(S/S)
 PROJECTION USED: UTM ZONE 18N EXTENDED
 DATUM USED: NAD 83
 MAPPING SYSTEM FOR SASKATCHEWAN FOR THE SASKREGIO (STS).
 RP COORDINATES ARE CURRENT AS OF MAY 1st, 2015.

BANK TIES			BANK TIES		
POINT	ANGLE	DISTANCE	POINT	ANGLE	DISTANCE
1	58°20'52"	282.11	27	317°18'24"	8.64
2	230°23'26"	219.02	28	302°16'48"	2.90
3	259°17'20"	209.17	29	160°10'00"	1.55
4	259°54'33"	194.46	30	124°17'14"	9.21
5	269°37'22"	182.89	31	118°38'32"	15.94
6	269°32'05"	182.64	32	118°12'51"	17.30
7	260°23'10"	183.29	33	112°20'45"	27.49
8	264°06'30"	161.92	34	109°15'03"	41.57
9	265°40'30"	155.15	35	107°19'20"	56.69
10	269°46'49"	144.06	36	102°09'24"	64.95
11	272°03'20"	135.87	37	100°01'13"	73.81
12	274°02'06"	127.07	38	95°35'23"	84.21
13	276°05'37"	113.98	39	91°28'06"	90.96
14	278°08'37"	102.49	40	87°44'15"	98.68
15	279°10'33"	90.65	41	85°21'54"	101.01
16	280°38'49"	80.37	42	81°20'07"	106.23
17	281°51'25"	69.65	43	79°15'28"	103.01
18	283°07'40"	61.24	44	77°11'03"	119.84
19	284°32'24"	54.78	45	75°27'30"	130.65
20	284°38'56"	49.07	46	73°57'30"	136.94
21	284°38'22"	44.18	47	73°14'24"	146.11
22	285°45'34"	39.63	48	72°57'04"	156.12
23	287°07'46"	34.78	49	73°02'25"	171.43
24	288°00'10"	30.68	50	72°54'09"	181.35
25	289°01'46"	27.32	51	73°46'10"	182.07
26	303°54'58"	21.73	52	76°49'05"	188.42



Meridian
 Surveys Ltd.
 PA10109499.png
 m/s / gcr